

RetroLink™

Low Cost Cathodic Protection for Minimal Structures



Typical caisson or small structure installation



Two anodes resting on the seabed give added stability to the RetroLink. It is much more stable than other hanging systems.

Product Overview

RetroLink is comprised of a series of anodes cast onto a wire rope core. The anodes have been sized and spaced to allow simple application to a multitude of offshore CP retrofit scenarios. RetroLink strings come in three standard sizes 30'0" 60'0" and 90'0" (9.15 m, 18.3 m, 26.45 m). They may deploy in three basic ways.

1. Surface suspended with trailing mud anodes. Used for 3-5 year CP of offshore structures in 90 fsw or less. Used as riser or infield pipeline CP system with insulated hang-off option.
2. Subsea suspended with trailing mud anodes. Used to supplement RetroPods™ on 10-year systems.
3. Mud deployed. Used to protect ultra shallow water structures, such as offshore wind turbine caissons. Used as retrofit system for offshore pipelines.

We have simplified the design process by providing a uncomplicated design template with only a few required variables. It will print out a solution and a material list that can be priced with an e-mail or phone call. The modular style of the system allows easy field modification for custom lengths.

Applications

- Minimal Structures and Caissons
- Pipelines

Main Benefits

- Cost effective; minimized engineering on a per-job basis allows for significant savings
- Modular design allows easy customizing
- Can be installed on caissons and minimal structures from a small vessel, usually during topside inspection



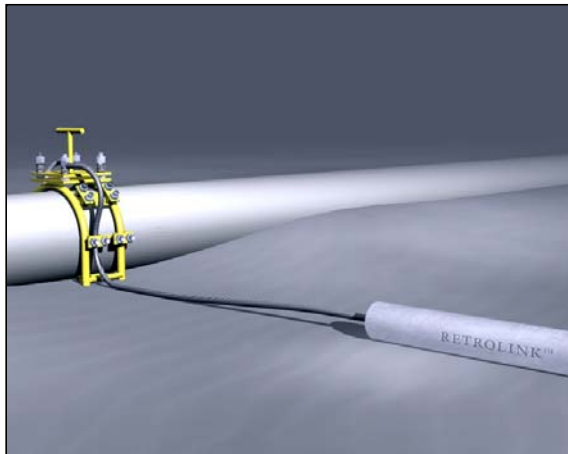
The weld-on standoff can be isolated for riser protection

RetroLink™ System Components

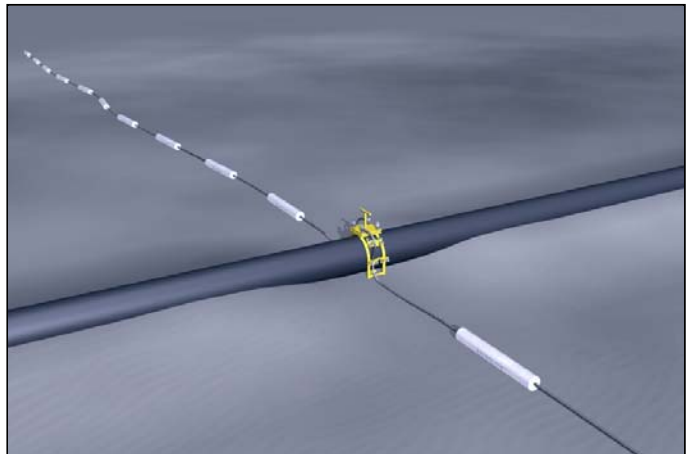
RetroLink has 5 major components:

1. **RetroString™** - This is the anodes cast onto the wire rope core / support. The three varieties

Shallow water	30'0" (9.15 m)	05 Anodes
Intermediate	60'0" (18.3 m)	10 Anodes
Deep water	90'0" (27.45 m)	15 Anodes
2. **Leader Assembly** - Standard 8m (25 ft) length (can be field adjusted). Coated wire rope with all hardware for either surface suspension with a topside suspension bracket, or subsea attachment with a RetroClamp™.
3. **Topside Suspension Bracket** - Allows topside suspension of RetroString™ may be electrically isolating for riser retrofits.
4. **RetroClamp™** Used for subsea attachment and electrical grounding to either jacket tubular or subsea pipeline.
5. **V-String™ / SunStation™** - Integral monitoring system available for special applications.



Pipeline retrofit with RetroClamp tie-back



RetroLink makes an excellent pipeline retrofit solution, providing low resistance and long life.